

Vivienda N°6

PLANTA SOTANO

Superficies utiles

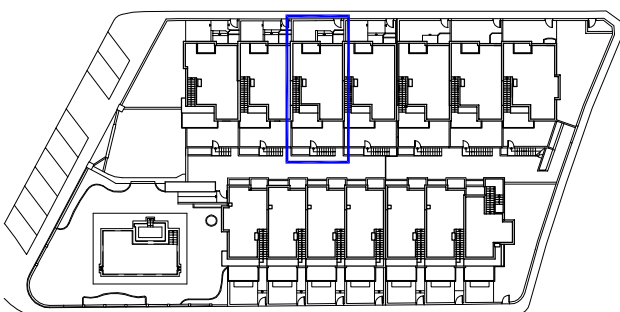
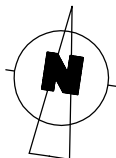
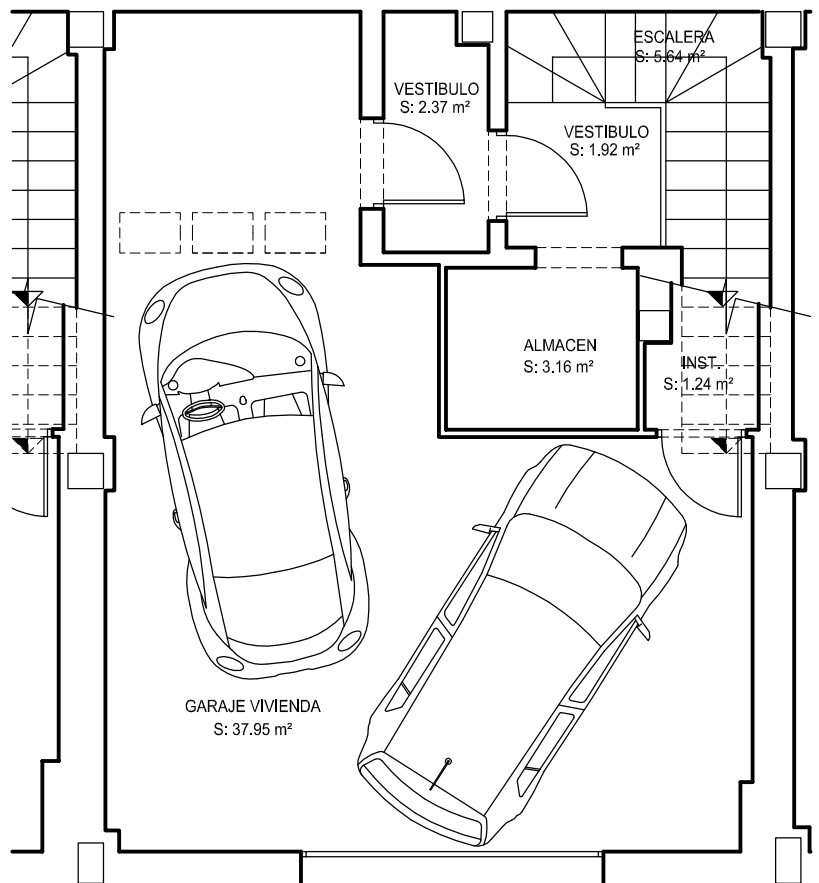
| | |
|--------------|-----------------------------|
| P. Sotano | 52.28 m ² |
| P. Baja | 51.29 m ² |
| P. Alta | 45.73 m ² |
| TOTAL | 149.30 m² |

Superficies construidas

| | |
|--------------|-----------------------------|
| P. Sotano | 65.29 m ² |
| P. Baja | 61.42 m ² |
| P. Alta | 53.48 m ² |
| TOTAL | 180.19 m² |

Superficies escriturables

| | |
|----------------------|-----------------------------|
| Superficies cerrada | 107.61 m ² |
| Terraza cubierta | 14.58 m ² |
| Sotano | 65.29 m ² |
| Terraza descubierta | 104.37 m ² |
| Escalera descubierta | 4.04 m ² |
| TOTAL | 295.89 m² |



Vivienda N°6

PLANTA BAJA

Superficies utiles

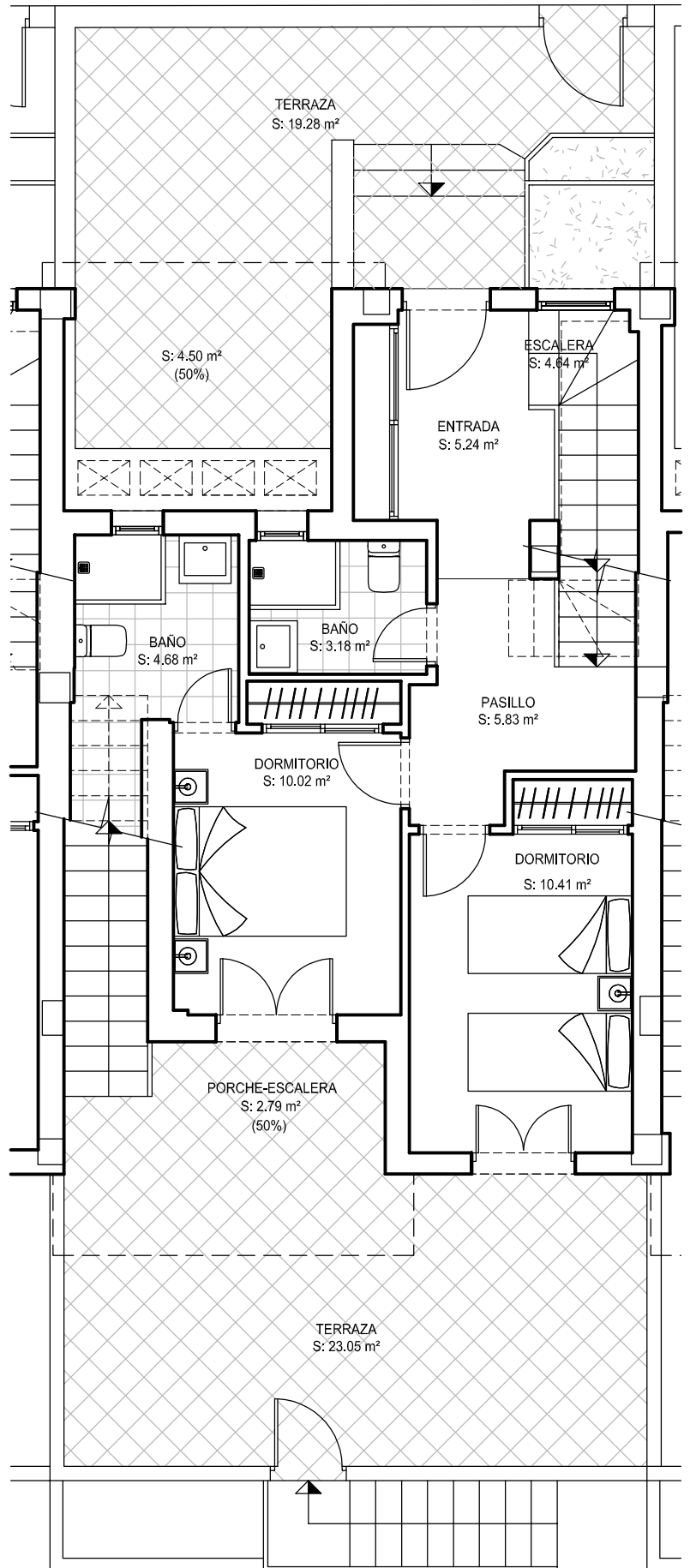
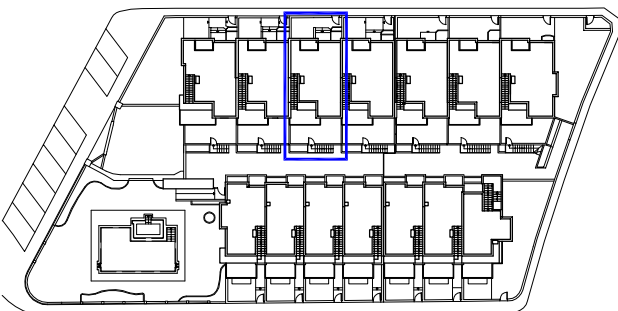
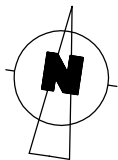
| | |
|--------------|-----------------------------|
| P. Sotano | 52.28 m ² |
| P. Baja | 51.29 m ² |
| P. Alta | 45.73 m ² |
| TOTAL | 149.30 m² |

Superficies construidas

| | |
|--------------|-----------------------------|
| P. Sotano | 65.29 m ² |
| P. Baja | 61.42 m ² |
| P. Alta | 53.48 m ² |
| TOTAL | 180.19 m² |

Superficies escriturables

| | |
|----------------------|-----------------------------|
| Superficies cerrada | 107.61 m ² |
| Terraza cubierta | 14.58 m ² |
| Sotano | 65.29 m ² |
| Terraza descubierta | 104.37 m ² |
| Escalera descubierta | 4.04 m ² |
| TOTAL | 295.89 m² |



Vivienda N°6

PLANTA ALTA

Superficies utiles

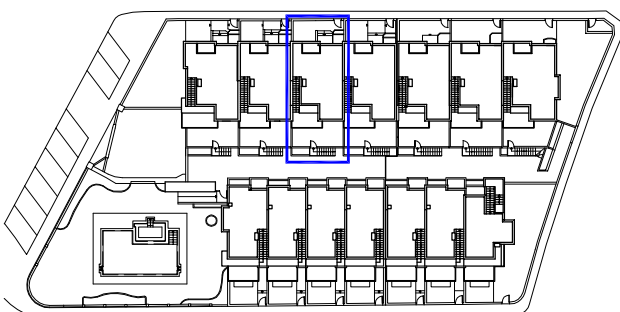
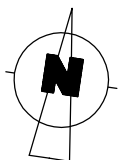
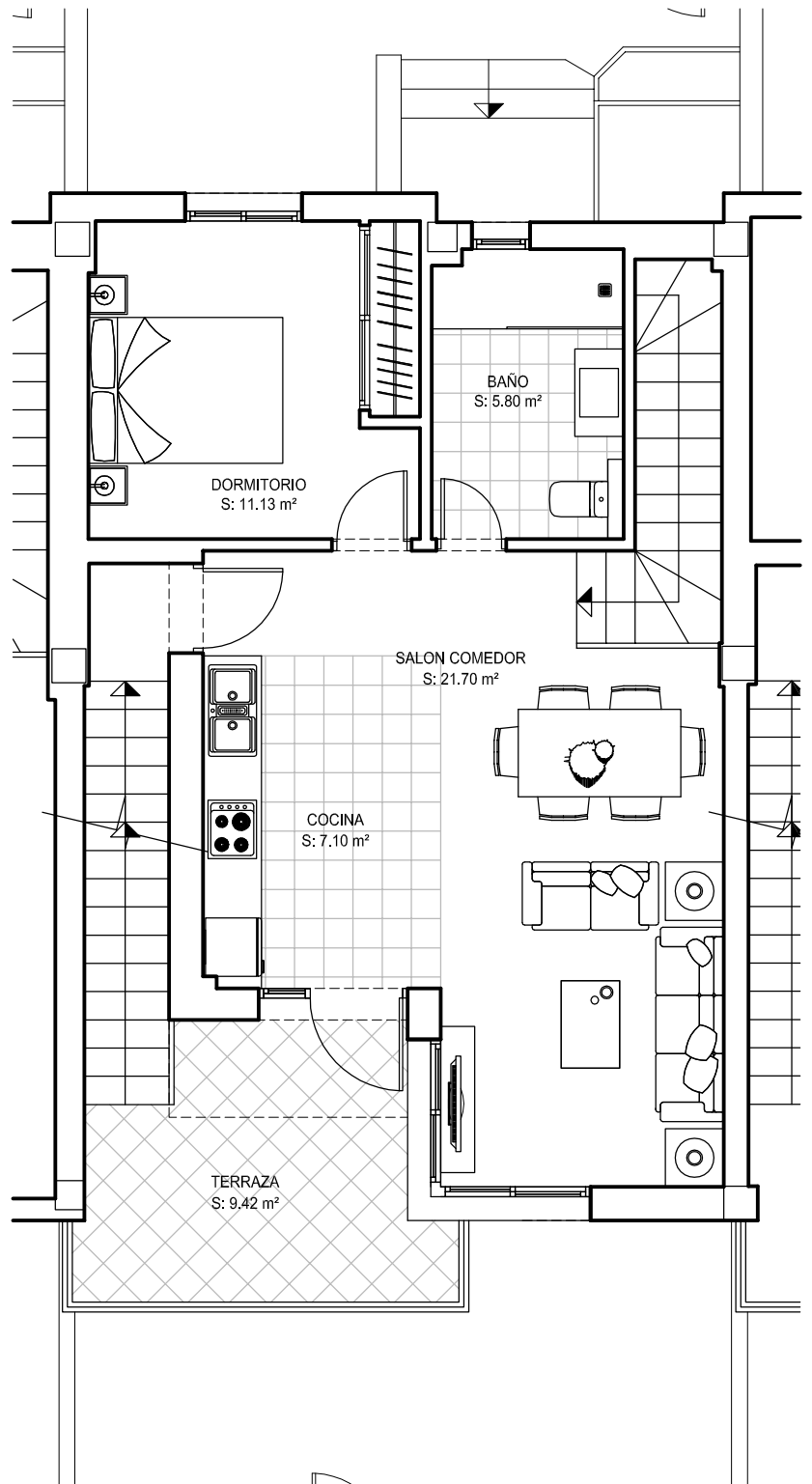
| | |
|--------------|-----------------------------|
| P. Sotano | 52.28 m ² |
| P. Baja | 51.29 m ² |
| P. Alta | 45.73 m ² |
| TOTAL | 149.30 m² |

Superficies construidas

| | |
|--------------|-----------------------------|
| P. Sotano | 65.29 m ² |
| P. Baja | 61.42 m ² |
| P. Alta | 53.48 m ² |
| TOTAL | 180.19 m² |

Superficies escriturables

| | |
|----------------------|-----------------------------|
| Superficies cerrada | 107.61 m ² |
| Terraza cubierta | 14.58 m ² |
| Sotano | 65.29 m ² |
| Terraza descubierta | 104.37 m ² |
| Escalera descubierta | 4.04 m ² |
| TOTAL | 295.89 m² |



Vivienda N°6

PLANTA CUBIERTA

Superficies utiles

| | |
|--------------|-----------------------------|
| P. Sotano | 52.28 m ² |
| P. Baja | 51.29 m ² |
| P. Alta | 45.73 m ² |
| TOTAL | 149.30 m² |

Superficies construidas

| | |
|--------------|-----------------------------|
| P. Sotano | 65.29 m ² |
| P. Baja | 61.42 m ² |
| P. Alta | 53.48 m ² |
| TOTAL | 180.19 m² |

Superficies escriturables

| | |
|----------------------|-----------------------------|
| Superficies cerrada | 107.61 m ² |
| Terraza cubierta | 14.58 m ² |
| Sotano | 65.29 m ² |
| Terraza descubierta | 104.37 m ² |
| Escalera descubierta | 4.04 m ² |
| TOTAL | 295.89 m² |

